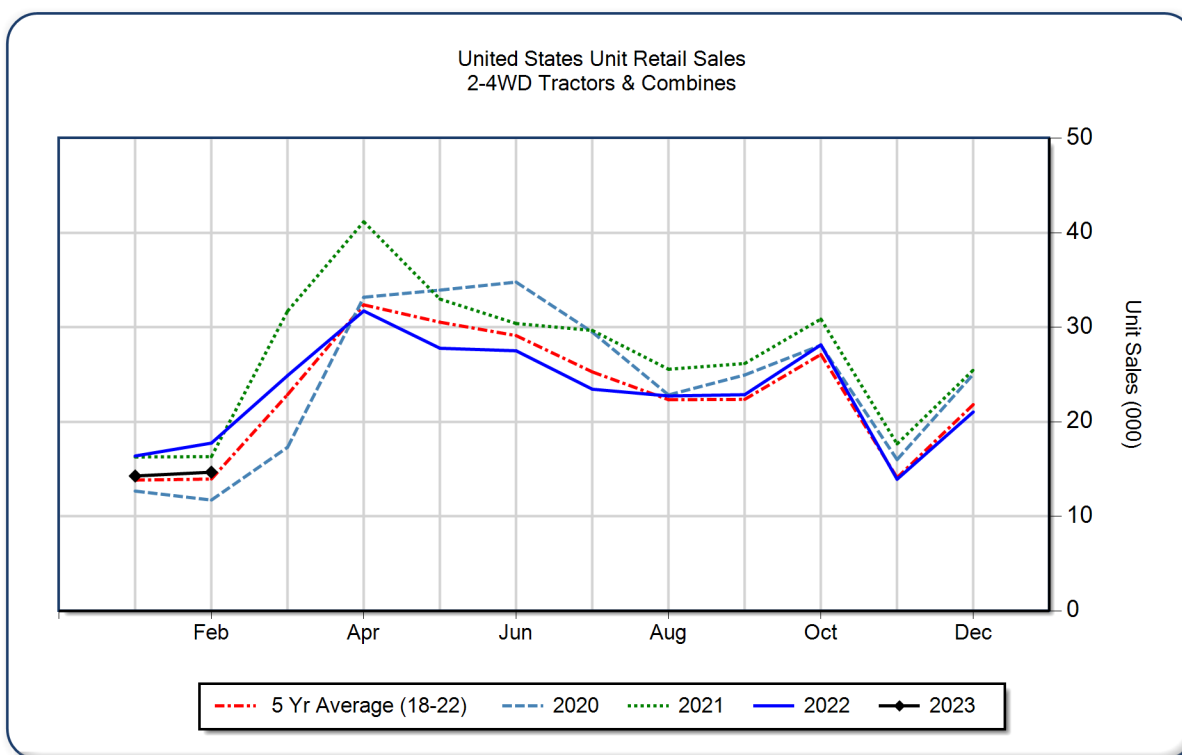


AEM United States Ag Tractor and Combine Report February 2023

Copyright, AEM. All rights reserved. If data is referenced, please acknowledge AEM as the source.

	February			YTD - February			Beginning Inventory Feb 2023
	2023	2022	%Chg	2023	2022	%Chg	
2WD Farm Tractors							
< 40 HP	8,785	11,801	-25.6	16,750	22,197	-24.5	103,241
40 < 100 HP	3,566	4,092	-12.9	7,333	8,150	-10.0	32,681
100+ HP	1,518	1,478	2.7	3,354	2,974	12.8	8,504
Total 2WD Farm Tractors	13,869	17,371	-20.2	27,437	33,321	-17.7	144,426
4WD Farm Tractors	265	171	55.0	484	395	22.5	394
Total Farm Tractors	14,134	17,542	-19.4	27,921	33,716	-17.2	144,820
Self-Prop Combines	530	200	165.0	1,007	405	148.6	1,206



The AEM Ag Tractor and Combine Report is provided monthly and is derived from AEM member companies through proprietary statistical reporting programs. The data is provided by AEM members and represents preliminary monthly retail sales of Ag equipment. Separate reports are available for the U.S., Canada and Russia. For more information, please visit: <https://www.aem.org/market-share-statistics/us-ag-tractor-and-combine-reports>. **Attention Media:** To speak with an AEM spokesperson about the data, please contact Sandra Mason at smason@aem.org.